

# CM<sup>®</sup> HTP & HTG

PLAIN & GEARED CLEVIS TROLLEY

## HTP & HTG | PLAIN & GEARED TYPE TROLLEY

The CM HTP and HTG Clevis Trolley can easily be installed in seconds for the exact positioning or seamless traversing of loads with any manual or powered hoist. This universal trolley is compatible with nearly any Columbus McKinnon hoist brand or model.

## FEATURES & BENEFITS

### QUICK, SIMPLE INSTALLATION IN SECONDS

Adjust the flange width in a matter of seconds by turning the trolley axle, eliminating the need for loose parts, including spacer washers, when installing the trolley.

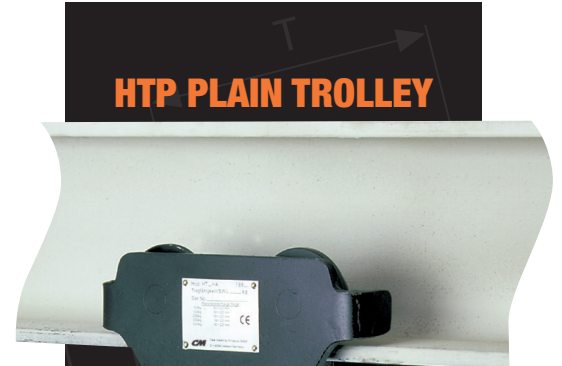
### A TRULY UNIVERSAL TROLLEY

The HTP and HTG Clevis Trolleys are compatible with nearly any CMCO brand or hoist model, so you're free to use whatever manual or powered hoist you have or need. Trolleys 5-ton capacity and under have A & B models adjustable to fit a wide range of beam widths and profiles.

### SMOOTH, RELIABLE OPERATION

Adjustments are made by rotating the clevis load bar, ensuring the centered positioning of the hoist in the clevis, preventing creeping to the left or right. Trolley wheels are pre-lubricated with encapsulated ball bearings for smooth rolling. Trolleys are equipped with wrap around steel trolley guards which protect the trolley and also provide drop protection. Rubber Bumpers are available as optional equipment.

HTP PLAIN TROLLEY



HTG GEARED TROLLEY





# HTP & HTG

# CLEVIS TROLLEY

## TECHNICAL DATA & DIMENSIONS

### MODEL HTP

MODEL	PART #	CAPACITY (ton)	FLANGE WIDTH (in)		FLANGE THICKNESS (in)	MIN. RADIUS (in)	WEIGHT (lbs.)
			Min	Max			
HTP 500	HTP0050A	1/2	1.97	8.67	0.99	35.43	18
HTP 1000	HTP0100A	1	1.97	8.67	0.99	35.43	20
HTP 2000	HTP0200A	2	2.60	8.67	0.99	45.28	35
HTP 3000	HTP0300A	3	2.92	8.67	0.99	55.12	71
HTP 5000	HTP0500A	5	3.55	8.67	0.99	70.87	106
HTP 500	HTP0500B	1/2	6.30	11.82	1.58	35.43	23
HTP 1000	HTP0100B	1	6.30	11.82	1.58	35.43	26
HTP 2000	HTP0200B	2	6.30	11.82	1.58	45.28	43
HTP 3000	HTP0300B	3	6.30	11.82	1.58	55.12	79
HTP 5000	HTP0500B	5	7.09	11.82	1.58	70.87	115

**HTP PLAIN TROLLEY**



### MODEL HTG

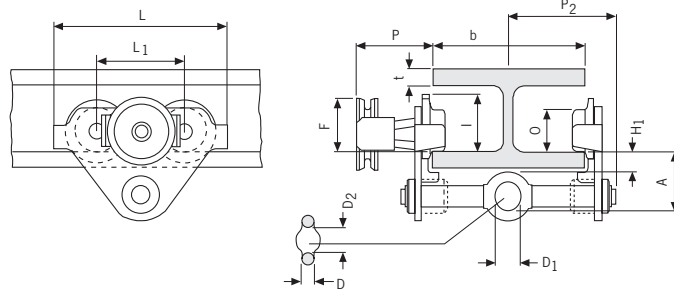
MODEL	PART #	CAPACITY (ton)	FLANGE WIDTH (in)		FLANGE THICKNESS (in)	MIN. RADIUS (in)	WEIGHT (lbs.)
			Min	Max			
HTG 500A	HTG0050A	1/2 ton	1.97	8.67	0.99	35.43	21
HTG 1000A	HTG0100A	1 ton	1.97	8.67	0.99	35.43	25
HTG 2000A	HTG0200A	2 ton	2.60	8.67	0.99	45.28	40
HTG 3000A	HTG0300A	3 ton	2.92	8.67	0.99	55.12	78
HTG 5000A	HTG0500A	5 ton	3.55	8.67	0.99	70.87	114
HTG 500B	HTG0050B	1/2 ton	6.30	11.82	1.58	35.43	28
HTG 1000B	HTG0100B	1 ton	6.30	11.82	1.58	35.43	31
HTG 2000B	HTG0200B	2 ton	6.30	11.82	1.58	45.28	47
HTG 3000B	HTG0300B	3 ton	6.30	11.82	1.58	55.12	86
HTG 5000B	HTG0500B	5 ton	7.09	11.82	1.58	70.87	123
HTG 10000B	HTG1000B	10 ton	4.93	12.21	1.58	70.87	229
HTG 20000B	HTG2000B	20 ton	4.93	12.21	1.58	196.85	507

**HTG GEARED TROLLEY**



**HTP 1/2 - 5 TON**

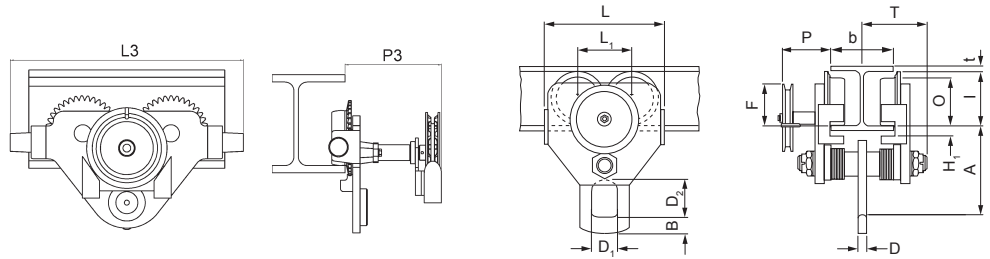
HTP



MODEL	HTP 500-A	HTP 1000-A	HTP 2000-A	HTP 3000-A	HTP 5000-A	HTP 500-B	HTP 1000-B	HTP 2000-B	HTP 3000-B	HTP 5000-B
A (in.)	3.03	3.25	3.88	4.49	5.22	3.62	3.84	4.47	5.08	5.81
D (in.)	0.63	0.67	0.87	1.02	1.30	0.63	0.67	0.87	1.02	1.30
D1 (in.)	0.98	1.18	1.57	1.89	2.36	0.98	1.18	1.57	1.89	2.36
D2 (in.)	1.18	1.38	1.85	2.28	2.76	1.18	1.38	1.85	2.28	2.76
H1 (in.)	1.20	1.20	1.20	1.18	1.18	1.79	1.79	1.79	1.77	1.77
I (HTP) (in.)	2.81	2.81	3.76	5.16	5.61	2.81	2.81	3.76	5.16	5.61
L (in.)	10.24	10.24	12.20	15.35	17.72	10.24	10.24	12.20	15.35	17.72
L1 (in.)	5.12	5.12	5.91	7.09	8.23	5.12	5.12	5.91	7.09	8.23
O (in.)	2.36	2.36	3.15	4.41	4.92	2.36	2.36	3.15	4.41	4.92
P2 (in.)	5.75	5.91	6.10	6.30	6.59	7.36	7.36	7.46	7.54	7.54
L3 (in.)	13.62	13.62	15.59	18.74	21.89	13.62	13.62	15.59	18.74	21.89

**HTG 1/2 - 5 TON**

HTG



MODEL	HTG 500-A	HTG 1000-A	HTG 2000-A	HTG 3000-A	HTG 5000-A	HTG 500-B	HTG 1000-B	HTG 2000-B	HTG 3000-B	HTG 5000-B
A (in.)	3.03	3.25	3.88	4.49	5.22	3.62	3.84	4.47	5.08	5.81
D (in.)	0.63	0.67	0.87	1.02	1.30	0.63	0.67	0.87	1.02	1.30
D1 (in.)	0.98	1.18	1.57	1.89	2.36	0.98	1.18	1.57	1.89	2.36
D2 (in.)	1.18	1.38	1.85	2.28	2.76	1.18	1.38	1.85	2.28	2.76
F (HTG) (in.)	3.60	3.60	3.56	4.23	5.89	3.60	3.60	3.56	4.23	5.89
H1 (in.)	1.20	1.20	1.20	1.18	1.18	1.79	1.79	1.79	1.77	1.77
I (HTG) (in.)	3.01	3.01	3.86	5.22	5.85	3.01	3.01	3.86	5.22	5.85
L (in.)	10.24	10.24	12.20	15.35	17.72	10.24	10.24	12.20	15.35	17.72
L1 (in.)	5.12	5.12	5.91	7.09	8.23	5.12	5.12	5.91	7.09	8.23
O (in.)	2.36	2.36	3.15	4.41	4.92	2.36	2.36	3.15	4.41	4.92
P (HTG) (in.)	4.33	4.33	4.33	4.33	4.33	4.33	4.33	4.33	4.33	4.33
P2 (in.)	5.75	5.91	6.10	6.30	6.59	7.36	7.36	7.46	7.54	7.54
L3 (in.)	13.62	13.62	15.59	18.74	21.89	13.62	13.62	15.59	18.74	21.89
P3 (in.)	7.64	7.64	7.64	7.68	7.68	7.64	7.64	7.64	7.68	7.68